



# Hydraulic Piston Pumps

Series P2 / P3  
Variable Displacement

aerospace  
climate control  
electromechanical  
filtration  
fluid & gas handling  
**hydraulics**  
pneumatics  
process control  
sealing & shielding

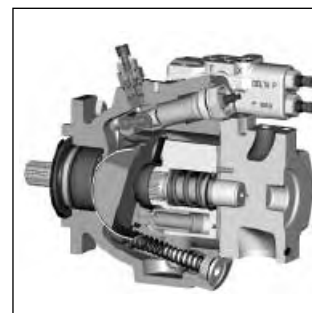


ENGINEERING YOUR SUCCESS.

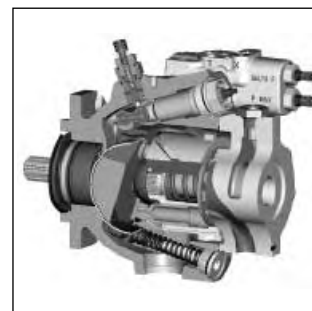
**Technical Features**

- Compact design
- Low noise level
- Service friendly
- Reliable
- Long-lasting
- Flexible
- Easy to install
- High self-priming speed

**P2 Series**

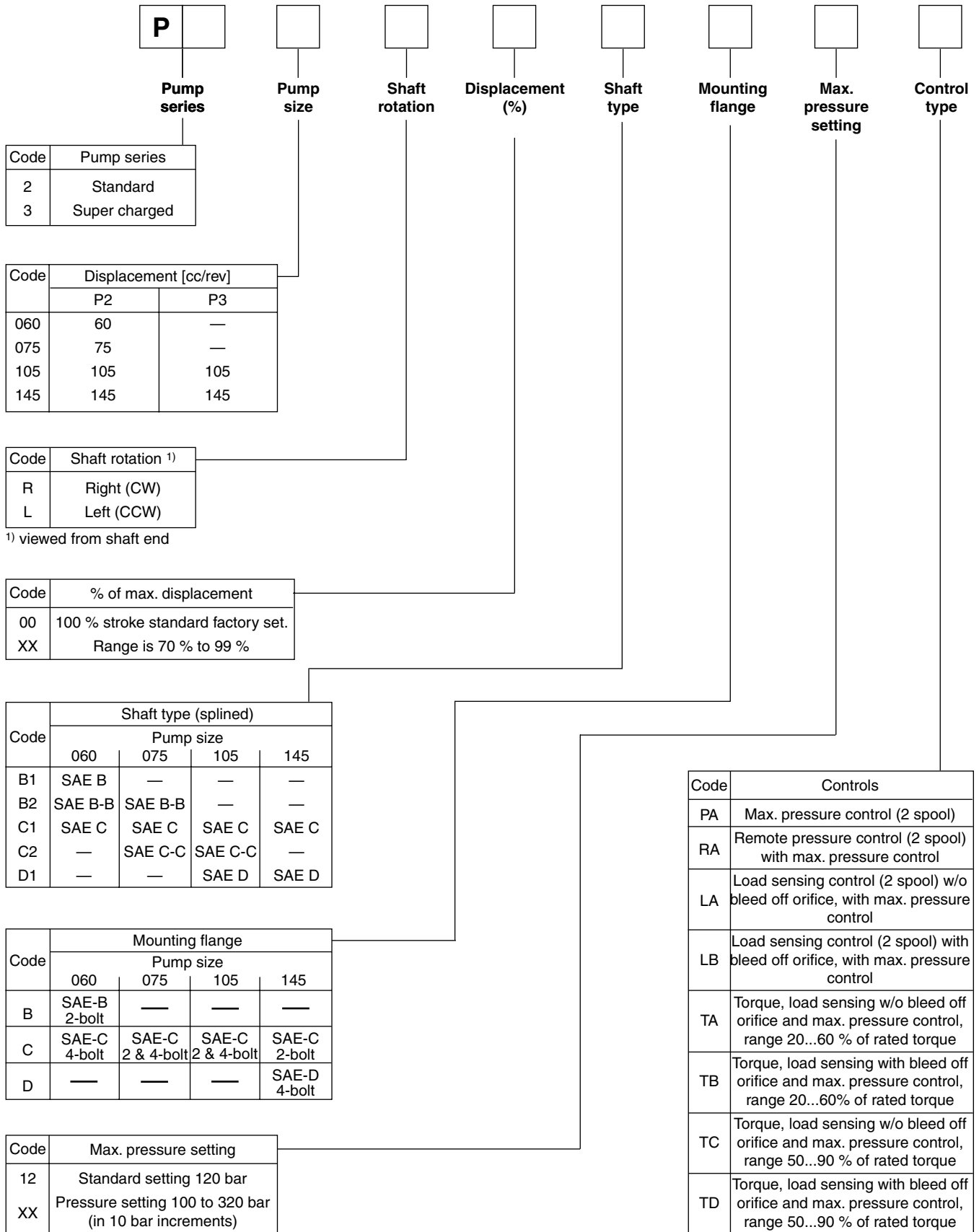


**P3 Series**



**Technical Data**

		P2 Series				P3 Series	
		P2060	P2075	P2105	P2145	P3105	P3145
<b>Frame size</b>							
Max. displacement	[cm <sup>3</sup> /rev]	60	75	105	145	105	145
Self-priming speed at 1 bar absolute inlet pressure	[rpm]	2800	2500	2300	2200	2600	2500
Max. continuous pressure	[bar]	320	320	320	320	320	320
Peak pressure	[bar]	370	370	370	370	370	370
Min. inlet pressure absolute	[bar]	0.8	0.8	0.8	0.8	0.8	0.8
at max. speed	[in Hg vacuum]	5.8	5.8	5.8	5.8	5.8	5.8
Max. inlet pressure	[bar]	10	10	10	10	1.5	1.5
Max. case drain pressure	[bar]	0.5	0.5	0.5	0.5	1	1
Noise level at full flow at 1800 rpm and 250 bar	[dB(A)]	74	76	78	80	78	80
Weight with load sense control	[kg]	37	44	63	78	62	76
Mass moment of inertia (at axis of shaft)	[kg m <sup>2</sup> ]	0.0061	0.0101	0.0168	0.0241	0.0177	0.0264



□  
**Delta pressure setting**

□  
**Seals**

□  
**Torque control setting**

□  
**Thru drive**

□  
**Port location**

□  
**Multiple pump combination**

□  
**Modifications**

Pump	Code	Modifications
P2	U	No paint
	P	Parker black painted
P3	D	No paint
	E	Parker black painted

Code	Multiple pump option <sup>2)</sup>
1	Single pump
2	Front pump of multiple pumps <sup>3)</sup>
3	Middle pump of multiple pumps <sup>3)</sup>
4	Rear pump of multiple pumps <sup>3)</sup>

<sup>2)</sup>For multiple pump assemblies please contact manufacturer for issue of part number.

<sup>3)</sup>Choose this option if pump is considered to be shipped as part of a combination assembled by manufacturer, otherwise please use option 1

Code	Port location	Pump				P2		P3	
		060	075	105	145	105	145		
A	Side ports, UNC thread	•	•	•	•	•	•	•	
B	Side ports, metric thread	•	•	•	•	•	•	•	
G	Rear ports, UNC thread	•	•	—	—	—	—	—	
H	Rear ports, metric thread	•	•	—	—	—	—	—	

Code	Thru drive	Pump size				
		060	075	105	145	
S1	No thru drive	•	•	•	•	
T1	Prepared for thru drive - no coupling	•	•	•	•	
A1	SAE A 2-bolt	SAE A, spline	•	•	•	•
		SAE B, spline	•	•	•	•
B1	SAE B 2-bolt	SAE B, spline	•	•	•	•
B2	SAE B 2-bolt	SAE B-B, spline	•	•	•	•
C1	SAE C 2-bolt	SAE C, spline	•	•	•	•
C2	SAE C 2-bolt	SAE C-C, spline	—	—	—	•
C3	SAE C 4-bolt	SAE C, spline	•	•	•	•
C4	SAE C 4-bolt	SAE C-C, spline	—	—	—	•
D3	SAE D 4-bolt	SAE D, spline	—	—	—	•

Code	Torque control setting					
00	Standard (non torque controlled)					
XX	20% to 90% of rated torque	displ. [cc/rev]	060	075	105	145
		torque [Nm]	339	424	594	820

Code	Delta pressure setting
00	Not applicable for PA controlled pumps
XX	Δ pressure setting range 10 to 35 bar (standard 20 bar)

Code	Seals
N	NBR, single shaft seal
D	NBR, double shaft seal
V	FPM, single shaft seal
T	FPM, double shaft seal

PI P2-P3 UK.PM6.5 RH





# HydraTorque

For a copy of the full catalogue and further support  
please contact Hydratorque

(07) 3390 7188

[sales@hydratorque.com.au](mailto:sales@hydratorque.com.au)

[www.hydratorque.com.au](http://www.hydratorque.com.au)

***Fluid Power Solutions***